
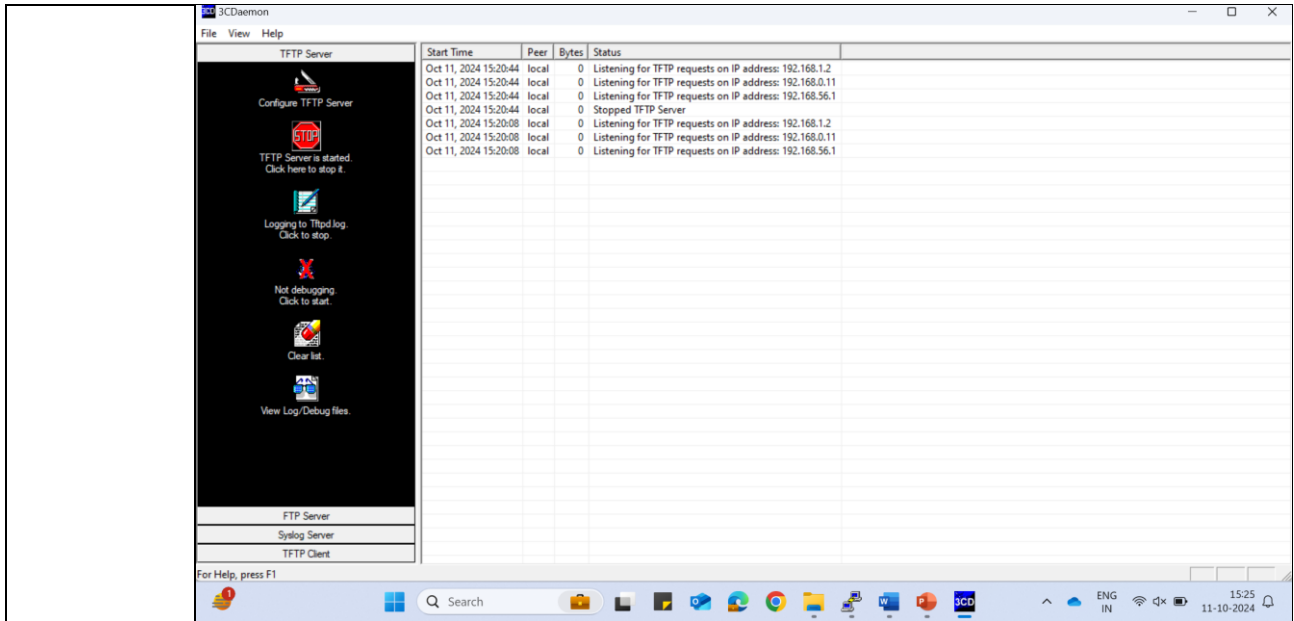


1. FTP/TFTP Upgrade

Testcase	FTP/TFTP Upgrade
Procedure	<ol style="list-style-type: none"> 1. Login to switch using console and configure it as required. 2. Set IP address in laptop and install a tftp/ftp server. Eg: 3cdaemon. 3. Follow the process mentioned below. <div style="text-align: center;"> <p>VLAN -1 IP Address of Switch - 192.168.0.1/24</p>  <p>G 0/1</p> <p>IP Address of PC 192.168.0.11/24</p> </div>
Configuration	<ul style="list-style-type: none"> • Check the version present in switch using the command "show version". <pre>Switch_config#show version Alpha Bridge Technologies Private Limited Internetwork Operating System Software AS210T Software, Version 2.2.0D Build 127313, RELEASE SOFTWARE Copyright (c) 2021 Alpha Bridge. All rights reserved Compiled: 2024-5-23 15:29:32 by SYS, Image text-base: 0x80008000 ROM: System Bootstrap, Version 0.4.8, hardware version:A Serial num:G20009059001, ID num:G20009059001 System image file is "Switch.bin" ABTPL AS210T 131072K bytes of memory,16384K bytes of flash Base ethernet MAC Address: c8:6b:bc:a0:0c:35 snmp info: vend_ID:58158 product_ID:311 system_ID:1.3.6.1.4.1.58158.1.311.0 Switch uptime is 0:00:43:10, The current time: 2000-1-1 0:43:11 Reboot history information: No. 1: System is rebooted by power-on Switch_config#</pre> <ul style="list-style-type: none"> • Upgrading the firmware using command line and tftp server. • Check whether the tftp server is reachable from switch or not <p>My tftp server is on 192.168.0.11</p> <pre>Switch_config# Switch_config#ping 192.168.0.11 PING 192.168.0.11 (192.168.0.11): 56 data bytes !!!! --- 192.168.0.11 ping statistics --- 5 packets transmitted, 5 packets received, 0% packet loss round-trip min/avg/max = 0/4/20 ms Switch_config#</pre> <ol style="list-style-type: none"> 1. Start the tftp server, using 3cdaemon as tftp server.



2. Use the command in the privileged mode to load the firmware in the switch

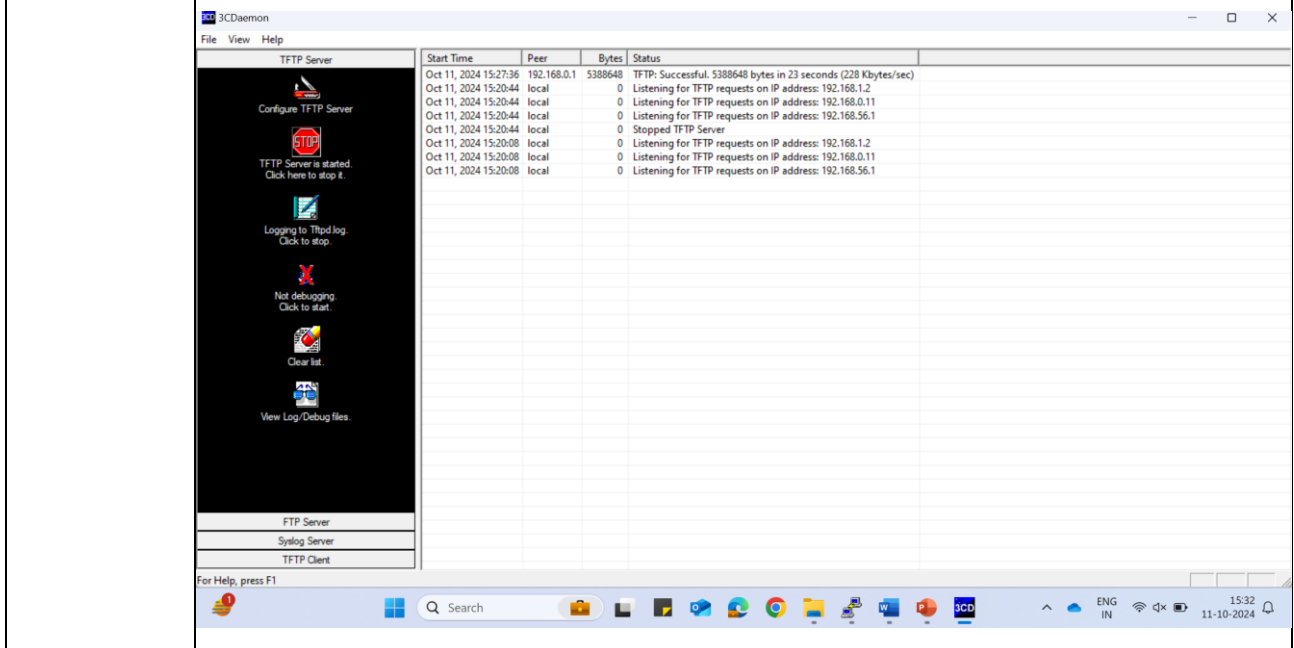
Command: copy tftp flash 192.168.0.11 ----- > press enter

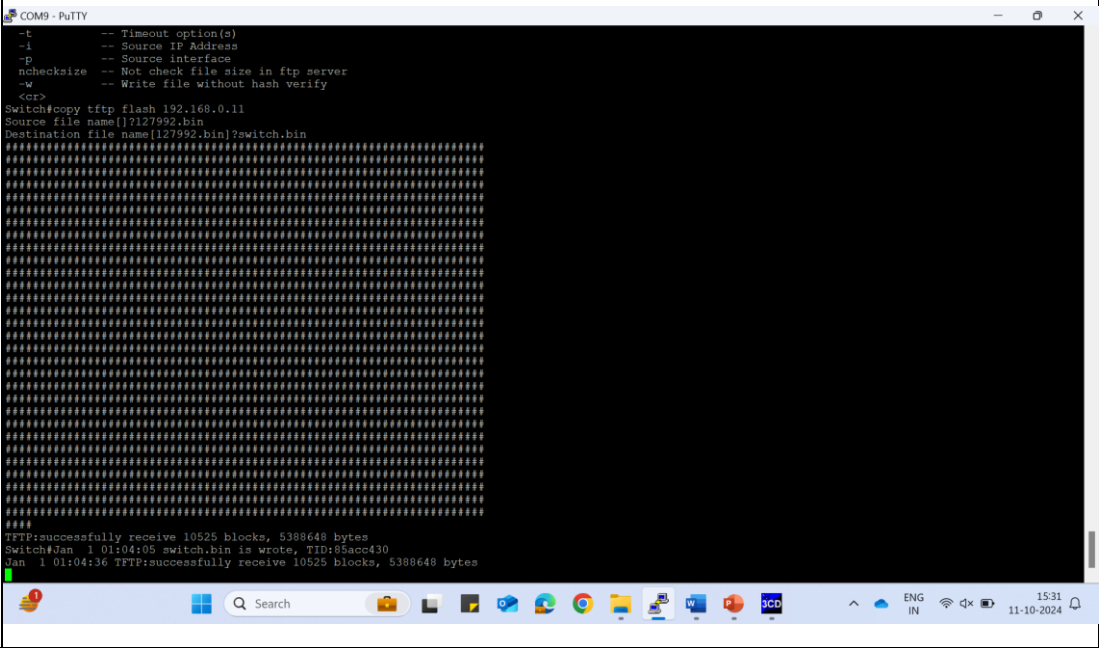
Source file: file name in laptop

Destination file: switch.bin

```
Switch#copy tftp flash 192.168.0.11
Source file name[ ]?127992.bin
Destination file name[127992.bin]?switch.bin
```

3. Check in the tftp server weather the file transfer is started or not. If it is completed it will show TFTP successful.



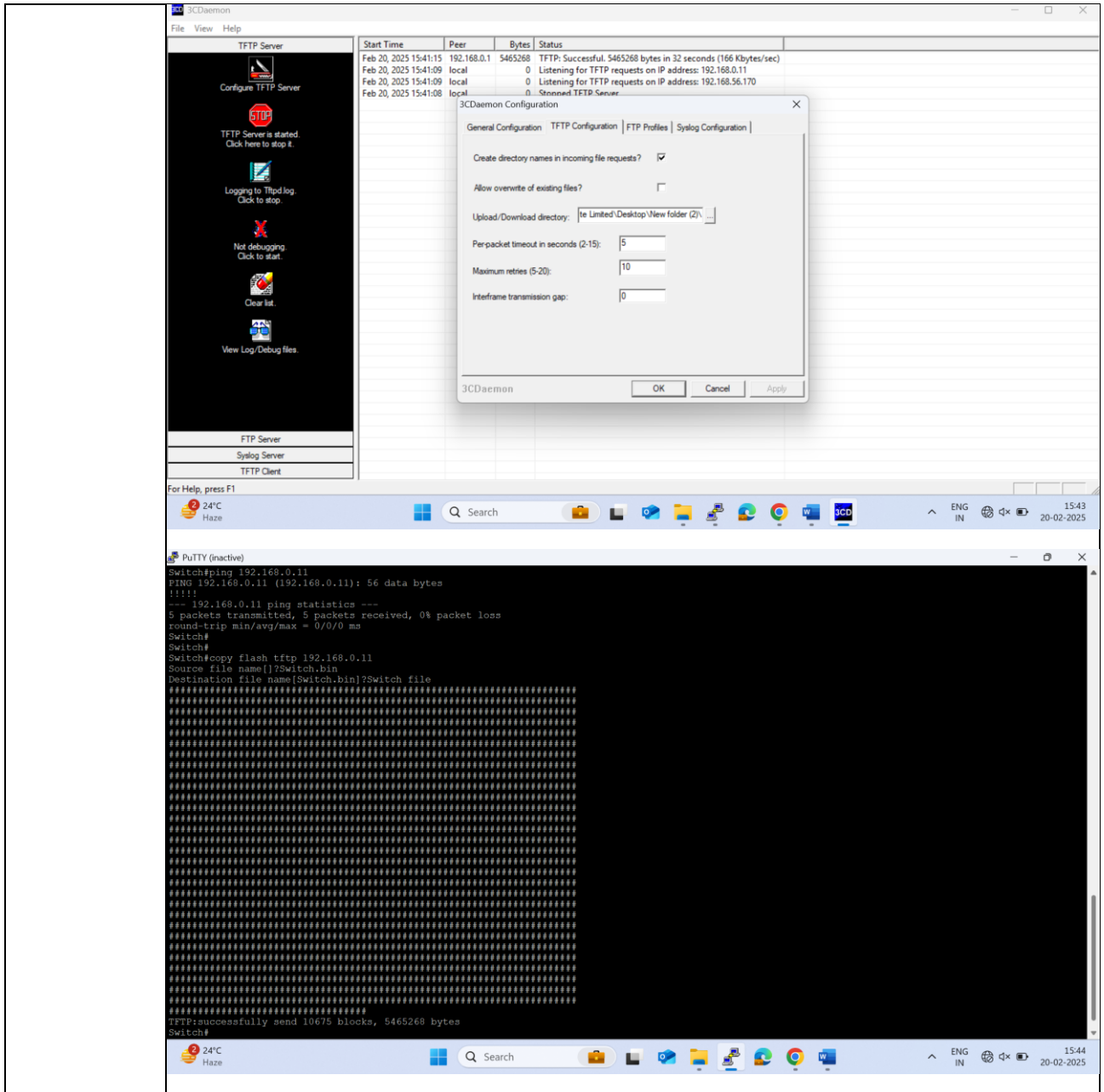
	<p>4. Wait until you get the message from switch, that the file transfer is successful.</p> 
<p>Test result</p>	<ul style="list-style-type: none"> Now restart the switch and check the version in the switch using the show version. Command: reboot <pre>Switch_config#show version Alpha Bridge Technologies Private Limited Internetwork Operating System Software AS210T Software, Version 2.2.0D Build 127992, RELEASE SOFTWARE Copyright (c) 2021 Alpha Bridge. All rights reserved Compiled: 2024-6-12 12:35:13 by SYS, Image text-base: 0x80008000 ROM: System Bootstrap, Version 0.4.8, hardware version:A Serial num:G20009059001, ID num:G20009059001 System image file is "Switch.bin" ABTPL AS210T 131072K bytes of memory,16384K bytes of flash Base ethernet MAC Address: c8:6b:bc:a0:0c:35 snmp info: vend_ID:58158 product_ID:311 system_ID:1.3.6.1.4.1.58158.1.311.0 Switch uptime is 0:00:00:20, The current time: 2000-1-1 0:0:20 Reboot history information: No. 1: System is rebooted by power-on No. 2: System is rebooted by command at 2000-1-1 1:9:28, uptime 0:01:09:28 Switch_config#</pre>
<p>Remarks</p>	<p>Working</p>

TEST REPORT

The screenshot displays a Windows desktop environment. In the foreground, the '3C Daemon' application window is open, showing the 'TFTP Server' control panel. The control panel includes buttons for 'Configure TFTP Server', 'TFTP Server is started', 'Logging to Tftpd log', 'Not debugging', 'Clear list', and 'View Log/Debug files'. Below these are checkboxes for 'FTP Server', 'Syslog Server', and 'TFTP Client'. To the right of the control panel is a log window with the following data:

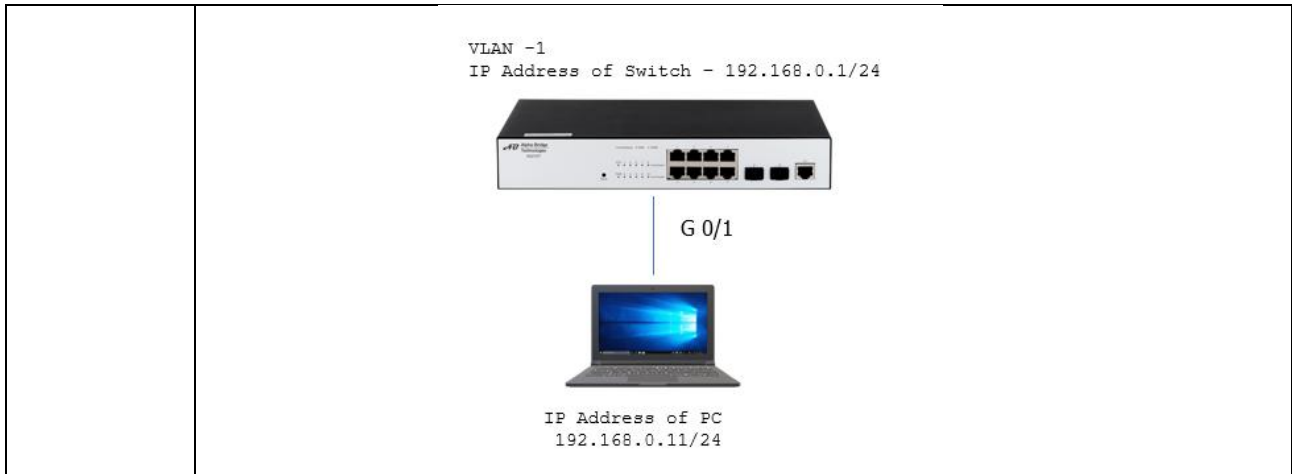
Start Time	Peer	Bytes	Status
Feb 20, 2025 15:41:15	192.168.0.1	5465268	TFTP: Successful, 5465268 bytes in 32 seconds (166 Kbytes/sec)
Feb 20, 2025 15:41:09	local	0	Listening for TFTP requests on IP address: 192.168.0.11
Feb 20, 2025 15:41:09	local	0	Listening for TFTP requests on IP address: 192.168.56.170
Feb 20, 2025 15:41:08	local	0	Stopped TFTP Server

Below the log window is a Windows taskbar with a search bar and system tray icons. In the background, a File Explorer window is open, showing a folder named 'New folder (2)' on the Desktop. The folder contains a single file named 'Switch file' with a size of 5,338 KB, last modified on 20-02-2025 at 15:41. The File Explorer sidebar shows the navigation pane with 'Home', 'Gallery', and 'Mukesh - Alpha Bridge' as the current location. The taskbar at the bottom shows the system clock at 15:45 on 20-02-2025.



2. FTP/TFTP Backup

Testcase	FTP/TFTP Backup
Procedure	<ol style="list-style-type: none"> 1. Login to switch using console and configure it as required. 2. Set IP address in laptop and install a tftp/ftp server. Eg: 3cdaemon. 3. Follow the process mentioned below.



1. Check whether the tftp server is reachable from switch or not
2. My tftp server is on 192.168.0.11
3. Start the tftp server, use 3cdaemon as tftp server.
4. Use the command in the privilege mode in switch.

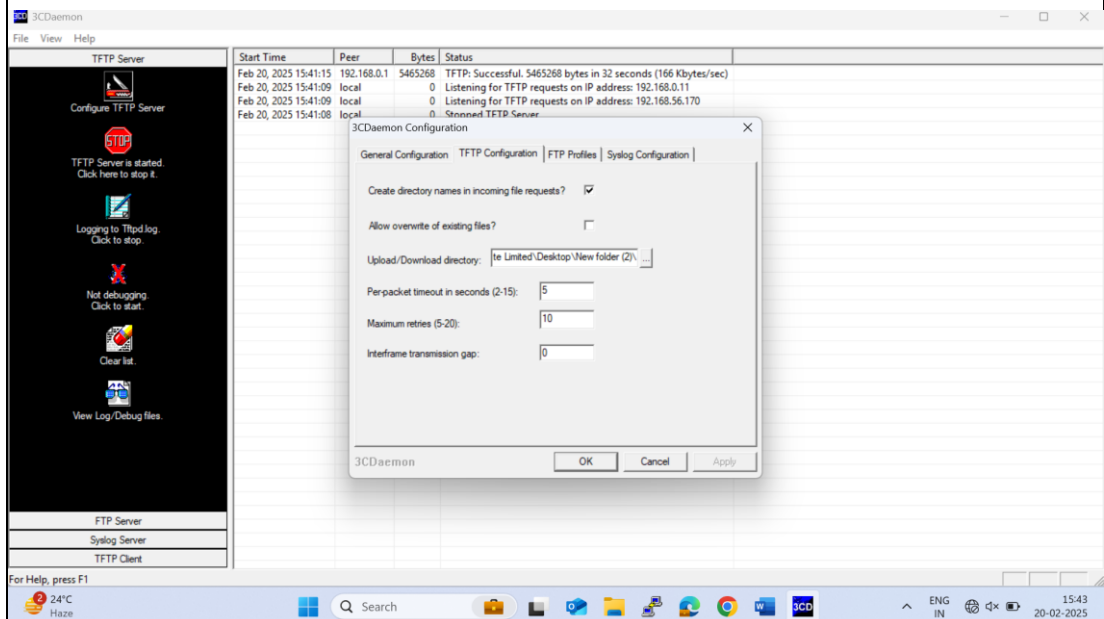
Command: copy flash tftp 192.168.0.11 -----> press enter

Source file: Switch.bin

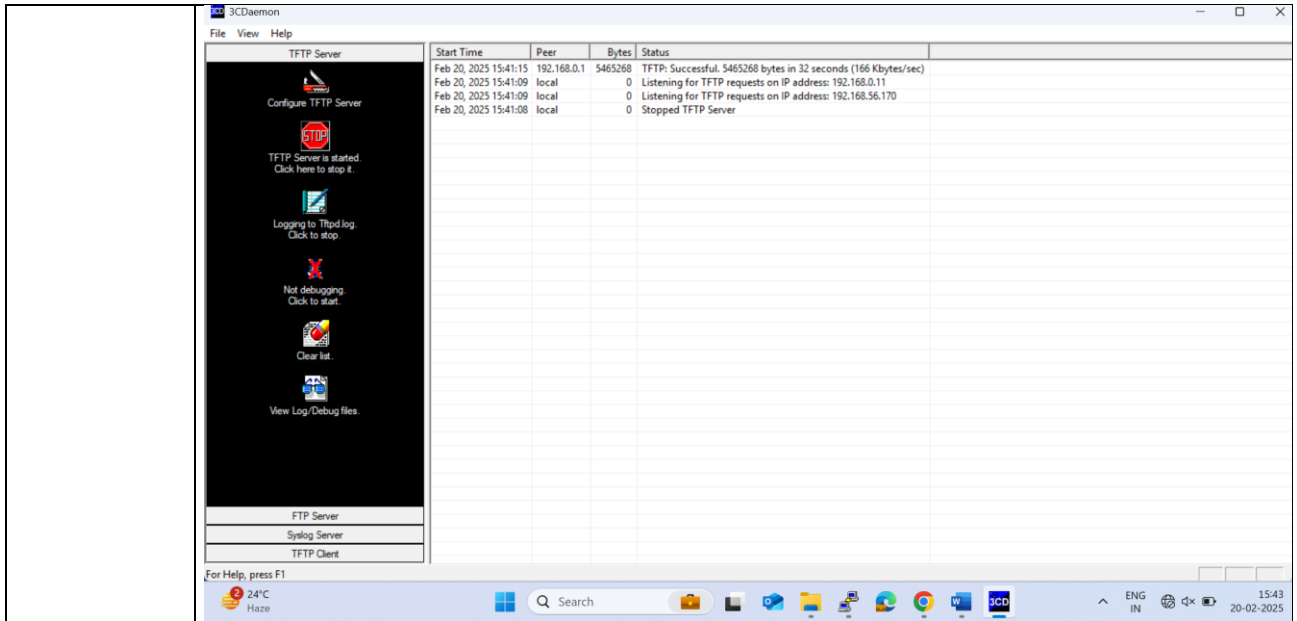
Destination file: Switch file **//file name to be saved in laptop**

5. Set the file location in tftp server. so that file will be saved in that location after transfer.

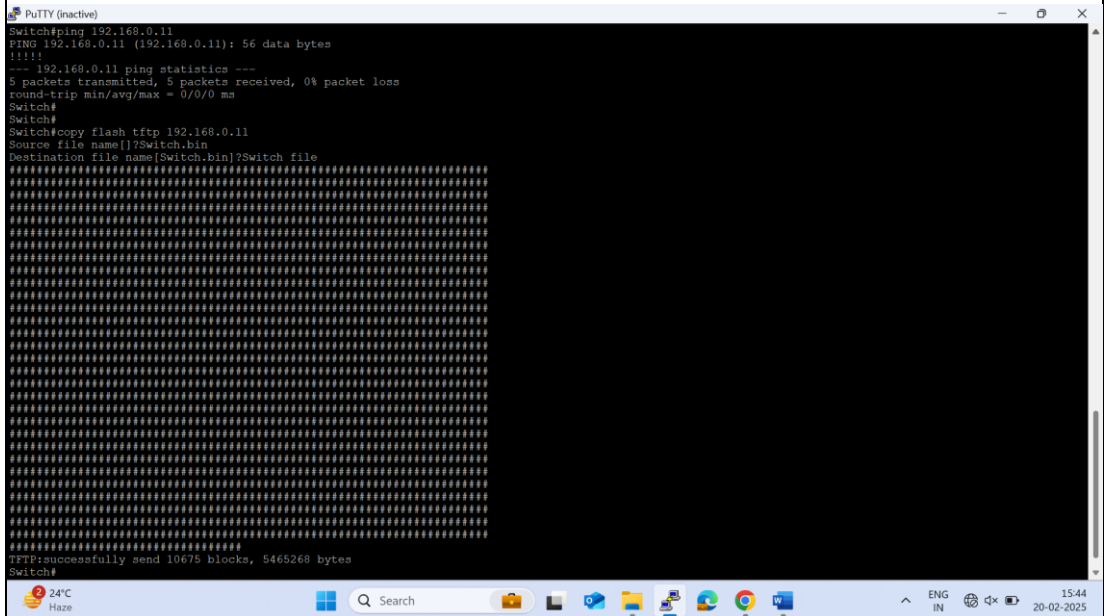
Configuration



5. Check in the tftp server whether the file transfer is started or not. If it is completed it will show TFTP successful.

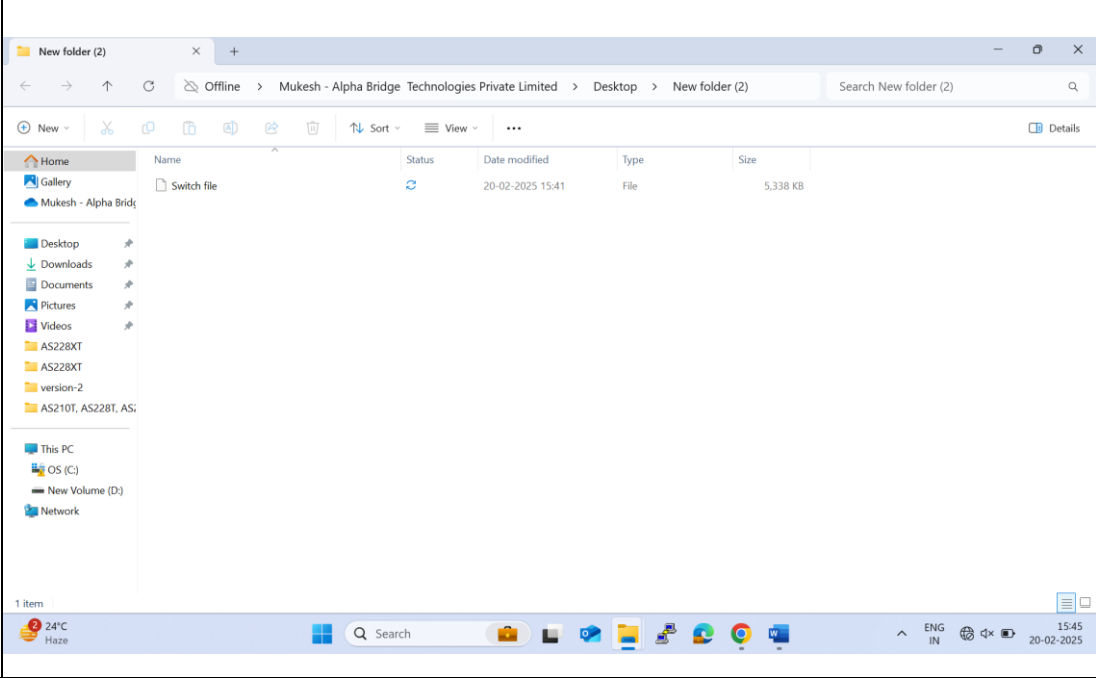


6. Wait until you get the message from switch, that the file transfer is successful.



Test result	<ul style="list-style-type: none">Now check the path where file have been saved.
-------------	--

TEST REPORT

	
Remarks	Working